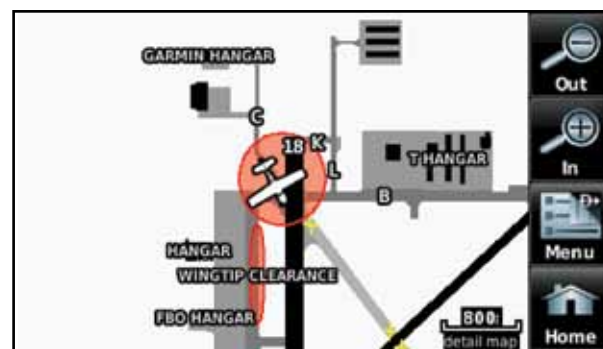


IFR map mode shows high and low enroute airways.



Preloaded SafeTaxi® diagrams with "hot spots" are available only on aera 550/560 models.

aera™ series specifications

Navigation features

Total Waypoints:	3000 with name and symbol
Nearest:	Continuously updated; Airport, VOR, NDB, INT, user, ARTCC, FSS, airspace, Wx, city
Routes:	50 reversible routes with up to 300 waypoints each
Tracks:	10,000 point automatic track log; 15 saved tracks; 900 points per saved track; lets you retrace your path in both directions
Map datums:	More than 100 plus user datum
Position format:	Lat/Lon, UTM/UPS, Maidenhead, MGRS

GPS performance

Receiver:	High-sensitivity GPS receiver with WAAS position accuracy. Continuously tracks and uses up to 12 satellites to compute and update your position
Acquisition times: (Average)	Warm: Less than 5 seconds Cold: Less than 45 seconds AutoLocate™: Less than 60 seconds
Update rate:	5/second, continuous
Interfaces:	RS232 port with NMEA 0183 data format (requires power-data cable, sold separately) and proprietary GARMIN USB interface. Accepts Aviation input format from panel-mount GPS. Also can connect to Garmin SL30 and SL40 for frequency tuning and GTX 330 for TIS traffic alerts.
GPS Antenna:	Internal. Unit also provides MCX connector for use with an optional external antenna (sold separately).

Moving map features

Basemap:	Built-in basemap shows roads, lakes, rivers, metro areas and surface features
Database:	Built-in navigation database with terrain and obstacle databases*. Includes Americas, Atlantic International, or Pacific International coverage, plus airport, FSS, ARTCC, and weather frequencies. Includes location data for private airports and heliports (U.S. and Europe) and visual reporting points (Europe). Garmin SafeTaxi® data (available only on aera 550/560 models) supports detailed airport and taxiway diagrams at over 950 U.S. airports.

Approach waypoints:	Navigation data includes final approach sequence waypoints for all published approaches
----------------------------	---

AOPA Airport Guide:	Included AOPA directory (on aera 550/560 only) contains detailed information on over 7,400 U.S. airports, along with airports of entry for Canada, Mexico and the Caribbean. Includes names and telephone numbers of aircraft services, fuel outlets, transportation, and more.
----------------------------	---

Custom POIs:	Supports user-created custom points-of-interest (POI) data, using Garmin's free POI Loader software.
---------------------	--

Uploadable maps:	Supports optional detailed maps
-------------------------	---------------------------------

Power

Source:	Replaceable, rechargeable lithium-ion battery
Battery life:	Up to 5 hours, depending on usage and settings. Battery life will be reduced with XM usage and higher brightness settings.

Automotive features

Street navigation:	North American and European versions of the aera come with City Navigator® NT street map coverage pre-installed. Like Garmin's popular nüvi® line of auto navigators, the aera series offers voice-guided turn-by-turn directions with text-to-speech technology that calls out streets by name. Pacific versions of aera will have preloaded street mapping for Australia and New Zealand.
Driver aids:	Bluetooth® wireless technology enables hands-free mobile calling. Also, premium features on aera 550 and 560 include lane assist with junction view, speed limit notification, and support for Navteq traffic alerts*.

Physical

Size:	5.3"W x 3.3"H x 0.9"D (13.5 x 8.4 x 2.3 cm)
Weight:	9.5 oz (270 g)
Display:	4.3" diagonal (10.9 cm) 480 x 272 pixels, color sunlight readable WQVGA TFT with adjustable white backlighting
User data storage:	Indefinite
Waterproof:	aera units and aviation mounts are waterproof to IPX7 standards

Accessories

Standard:	Free single database update on aera 500/510 models. Premium aera 550/560 models come with one year of prepaid database updates (including obstacles, navigation, AOPA airport directory and SafeTaxi®). Preloaded City Navigator® NT street maps USB interface cable GXM 40 smart antenna (on aera 510/560 only) 12-volt vehicle power cable and auto mount/friction mount Yoke mount and aviation cradle/cable assembly Owner's manual Quick reference guide AC Adapter (on aera 510/560 only) Carrying case (included with aera 550/560 only) MapSource microSD™ cards Replacement lithium-ion battery pack GA 25/27 external GPS antenna Suction cup mount External battery charger Carrying case (optional for aera 500/510)
Optional:	

* Obstacle data available only for U.S.A. and Europe

Specifications are subject to change without notice.



Garmin International, Inc.
1200 East 151st Street, Olathe, KS 66062
p: 913.397.8200 f: 913.397.8282

Garmin (Europe) Ltd., Liberty House, Hounsdown Business Park, Southampton, Hampshire, SO40 9RB, U.K. p: 44.1794.519944 f: 44.1794.519222

Garmin Corporation, No. 68, Jangshu 2nd Road, Shijr, Taipei County, Taiwan 886.2.2642.9199 fax 886.2.2642.9099



aera™

aera™ series portables
touchscreen navigation meets fly/drive versatility



Now, the company that brought you aviation’s first “mini-MFD” is taking the concept to a whole new level:

With the Garmin aera™ lineup of touchscreen GPS portables.

Featuring crisp 4.3-inch QVGA wide-format displays with menu-driven tap-and-drag user interface, these four versatile “dual boot” models let you transition seamlessly from runways to roadways with the best in Aviation and Automotive moving-map navigation. Leveraging Garmin’s industry-leading expertise in integrated systems design, the aera series offers a full range of smart, easy-to-use guidance solutions for today’s pilot/motorist.

[Welcome to a new era in portable GPS.]

In your aircraft, the aera’s detailed Sectional chart-style shaded mapping and extensive terrain and aviation databases (including private airports and heliports) help you visualize your flight path in relation to nearby nav aids, terrain, SUAs, obstructions, and so on. For added safety, a database-driven terrain advisory feature offers TAWS-like color coding and pop-up alerts when possible obstructions or ground proximity conflicts¹ loom ahead. Garmin’s patented Panel Page affords a reassuring backup to your panel-mounted instruments with its exclusive display of GPS-derived HSI, altimeter, groundspeed, vertical speed and turn indication. Plus, on the aera 550 and 560 models, preloaded Garmin SafeTaxi[®] charts provide detailed taxiway diagrams and position information for over 950 U.S. airports – while an included AOPA Airport Directory database gives you detailed listings, phone numbers, facilities and fuel location information on over 7,400 U.S. landing sites, as well as airports of entry for Canada, Mexico and the Caribbean. Other premium aera 550/560 features include higher-resolution 9 arc-second terrain/obstacle detail (providing over 11 times more onscreen resolution than the standard 30 arc-second display). Also, the 550 and 560 both come with one year of prepaid database updates. For added safety, TIS traffic alerting is supported by all four aera models (through an interface with your aircraft’s Garmin GTX 330 Mode S transponder or other compatible third-party traffic devices).



Graphical menus and easy-to-access “home” screen help simplify operation.



GPS-derived “Panel” page instrument reference.

Weather-watchers take note:

For continuous inflight weather awareness, both the aera 510 and 560 models provide access – via Garmin’s GXM 40 Smart Antenna/Receiver – to the latest in XM WX™ Satellite Weather capabilities¹. Crisp, high-resolution color graphics bring you detailed NEXRAD radar imaging and METARs data, as well as current reports on precipitation, lightning, winds aloft, airport terminal forecasts, and more. Weather graphics can be overlaid on your unit’s moving-map display. And for added entertainment value, your XM receiver can also be used to access over 170 channels of

Flying or driving, you’re covered

When your aircraft lands, your aera journey continues with full automotive GPS navigation and preloaded City Navigator[®] NT street map coverage for North America² (in the Americas aera) or Europe (in the Atlantic version). There’s also preloaded street mapping for Australia and New Zealand on Pacific versions of the aera. Operating much like Garmin’s popular nüvi[®] line of touchscreen auto navigators, all aera models offer voice-guided turn-by-turn directions with text-to-speech audio technology that calls out streets by name. In addition, built-in Bluetooth[®] support in automotive mode lets you wirelessly

interface aera with your mobile phone, to make and receive calls on the go. Other premium features available on the aera 550 and 560 models include lane assist with junction view, speed limit notification, Navteq traffic alerts³, and more.

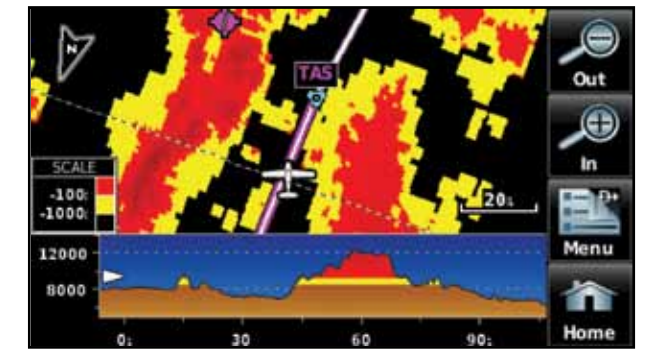
Skyways or highways, from driveway to destination: When you travel with Garmin’s aera series, you’ve got a world of navigation capability at your fingertips. And with four great models to choose from, it’s easy to find the aera portable solution that perfectly matches your needs and budget.



XM Radio support on aera 510 and 560 lets you enjoy 170+ audio channels.¹



Preloaded City Navigator[®] NT mapping makes street navigation easy. Shown with available junction view on aera 550/560 models.



Terrain page offers overhead and vertical profile views. Shown with high-resolution 9 arc-second terrain.



AOPA Airport Directory (on aera 550/560) details 7,400+ U.S. airports.

product comparison:	aera 500/510	aera 550/560
• Wide-format 4.3” QVGA touchscreen display	Yes	Yes
• High sensitivity GPS receiver with WAAS position accuracy	Yes	Yes
• Terrain resolution	Standard	High
• Rugged, waterproof design (IEC529 IPX-7 standards)	Yes	Yes
• SafeTaxi [®] airport diagrams (U.S. only)	No	Yes
• AOPA Airport Directory (U.S. only)	No	Yes
• One year aviation database subscription included	No	Yes
• GPS update rate	5 Hz	5 Hz
• GPS-derived Panel Page	Yes	Yes
• XM WX Satellite Weather capable ¹	510 only	560 only
• XM Satellite Radio capable ¹	510 only	560 only
• Preloaded City Navigator [®] NT street maps ²	Yes	Yes
• Turn-by-turn street directions with spoken street names (text-to-speech)	Yes	Yes
• Bluetooth [®] wireless technology (auto mode)	Yes	Yes
• Lane assist with junction view	No	Yes
• Speed Limit notification	No	Yes
• Navteq automotive traffic compatible ³	No	Yes
• Carrying case included	No	Yes

¹ NOTE: Subscriptions are required for optional XM weather and audio entertainment packages (sold separately).

² North American coverage includes the U.S., Canada and Puerto Rico, as well as the Cayman Islands and the Bahamas. Mexico coverage is not included.

³ Navteq traffic alerts require an external TMC receiver (sold separately).

* Obstacle data available only for U.S.A. and Europe