

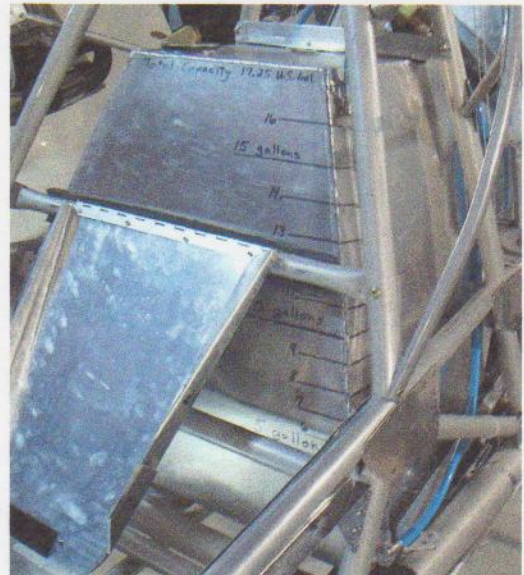
NOTE:

Prior to installation, you can install fittings in tank, and put hose between fittings, and carefully measure and mark each gallon.

You will have to remove fittings to install tank, or fill and measure tank in plane, either in flying position or resting on tail.

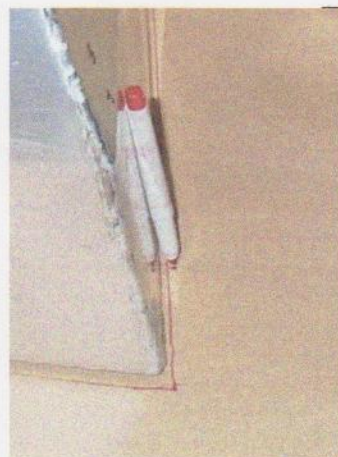
**** Check for weight and balance. You may need to add nose weight, or move battery forward.**

This 17 gallon tank has been pressure tested and installed in a CH 11 for fit. Before installation of tank, thoroughly rinse inside, and blow dry with hair dryer.



To Install (Initial Fit is Tight):

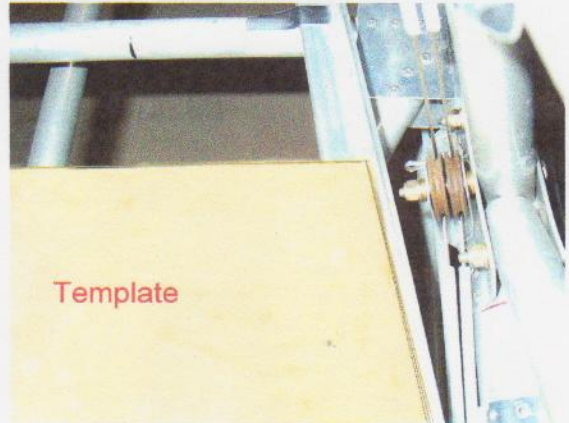
1. Trace bottom of tank on cardboard. Cut cardboard to leave an extra 1/16 to 1/8 inch all around tank. (No more than 1/8 inch).



2. Remove cross tube holding hinged access panel.
3. Insert short, notched angles, and rivet into place, near gear leg weldments, as shown.
4. Lay long angles across short angles and back cross brace, as shown.



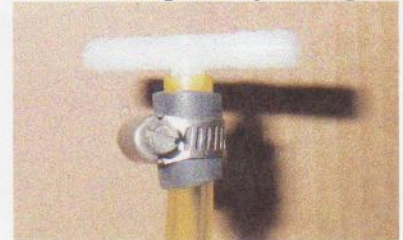
5. Insert cardboard template into position, centered between the long angles. Center angles evenly from side to side. Hold the back of template even with aileron cable pulleys. The support angles should not rest against the bolts holding the aileron cable pulleys.



6. Rivet angles into position, front and back, using long and short stainless steel rivets, where needed. One or two rivets in each angle will do.
7. Install the rear/bottom fitting in the rear bottom of the tank and the appropriate lengths of hose for your drain tube and to reach your fuel pump.



NOTE: Route the bottom drain tube to where you want to install the drain valve of your choice. (I bring tube forward to the bottom of the rear seat, and install a small gas shut-off valve to under side of seat tubing. Burn a hole in the fabric bottom, and let 2 inches of tube hang out, or just plug off drain outlet with 1/8 inch N.P.T.). Use a second piece of tubing, as



shown, to protect the main tube from being cut when using screw type clamps, as they may cut into tube.

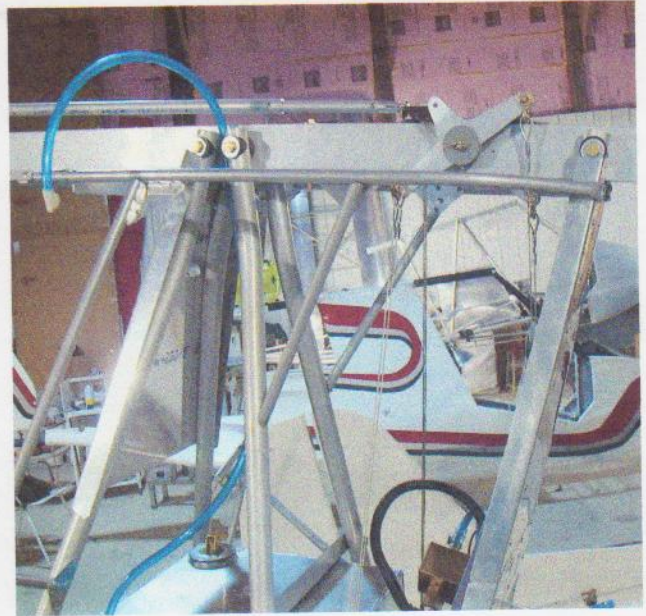
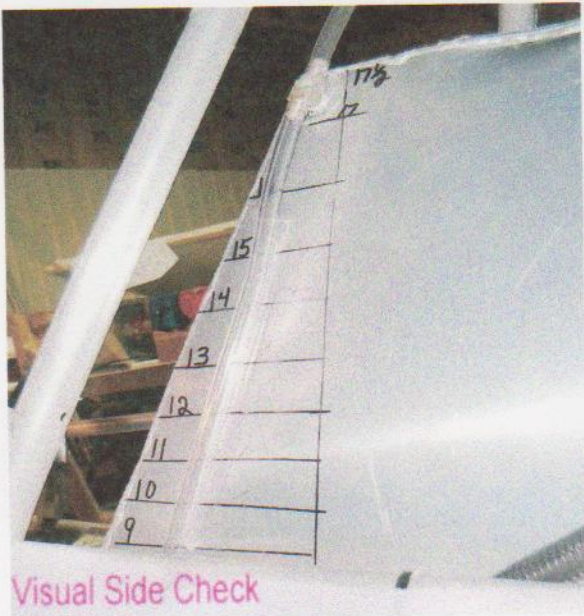
8. Pad back cross tube. Pipe foam insulation works well.



9. Insert tank as shown. It fits tight. Hit bottom front edge with heel of hand.



10. Install side fittings, vent tube and fuel sight tube as shown. Run vent tube up past the root tube.



11. Trim or bend hinged access panel to prevent access cover from rubbing on tank.
12. Install access panel as shown, and pad cross tube.



13. Install angle to hold tank down. It should be padded and bolted through uprights.



NOTE:

Check for C.G. Balance, by filling tank and see if nose comes down. You may have to move battery way forward, or add weight. (My fabric nose comes down with engine idling at 2000 RPM, with battery forward of rudder pedal stops).

**** Use clear tubing for sight gauge and drain only!**

**** Use pulse line tubing from pump to tank.**